

AIRCONCEPTS

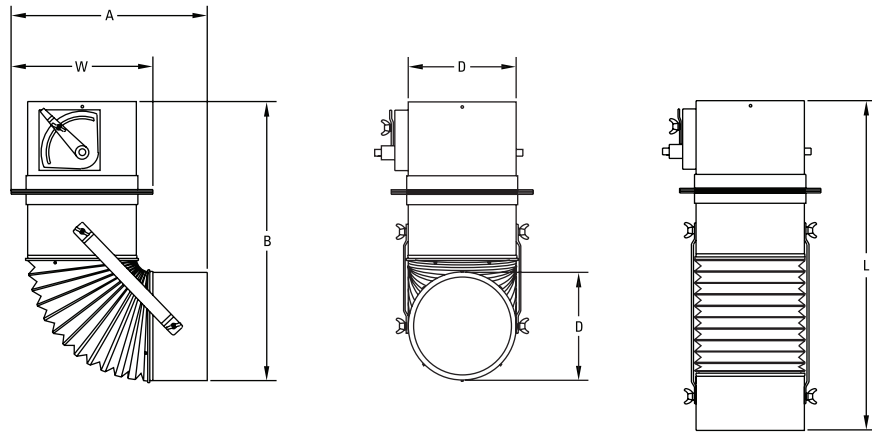
AIR DISTRIBUTION PRODUCTS



ADN/ADNA SERIES

ADN/ADNA

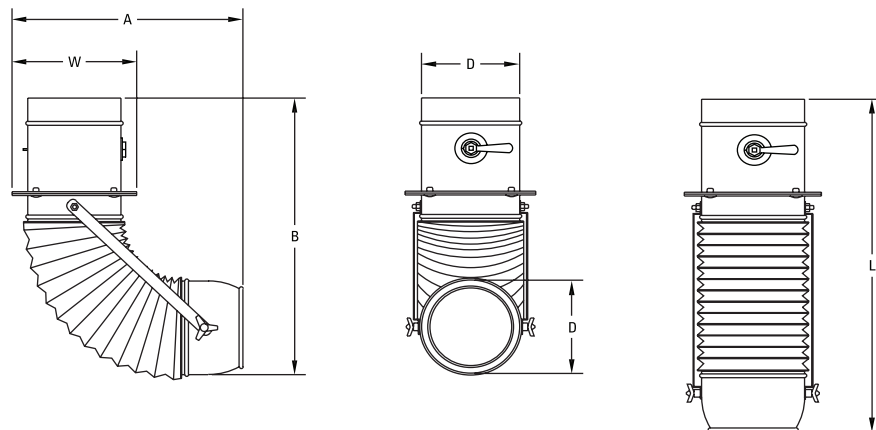
ADN



ADN Dimensions in Inches

MODEL	D	W	L	A	B
ADN-08	8	10 ³ / ₄	26 ³ / ₄	16 ¹ / ₂	24 ⁻¹ / ₄
ADN-10	10	12 ³ / ₄	27 ³ / ₄	18 ¹ / ₂	25
ADN-12	12	14 ³ / ₄	28 ³ / ₄	20	25 ³ / ₄

ADNA



ADNA Dimensions in Inches

MODEL	D	W	L	A	B
ADNA-06	6	8	18	15	17
ADNA-08	8	10	20 ¹ / ₄	17	18
ADNA-10	10	12	24	20 ¹ / ₂	20
ADNA-12	12	14 ³ / ₄	26 ¹ / ₂	25	22

Adjustability

- Directional control adjustable through a 180° degree deflection of air stream.
- Directional control adjustable through a 360° degree range of motion using a “ring to ring” turret-style rotation.
- Air volume control adjustable with locking quadrant damper.

Construction

- Heavy Gauge Steel (ADN)
- Heavy Gauge Aluminum (ADNA)
- Coated Fiberglass Cloth Fabric

Finishes

- Standard: Safety Orange (ADN)
- Standard: #72 Silver Metallic (ADNA)
- Custom colors available

[Performance Data] ADN/ADNA

MODEL	Air Flow (CFM)	Duct Velocity	0° Deflection		45° Deflection		90° Deflection		Vt Projection
			Ps	NC	Ps	NC	Ps	NC	
ADN-08	200	573	0.03	<20	0.05	<20	0.06	<20	3-8-16
	300	859	0.06	20	0.11	26	0.14	29	5-12-22
	400	1146	0.11	28	0.20	33	0.24	35	8-16-27
	500	1432	0.17	33	0.32	38	0.38	40	10-20-30
	600	1719	0.25	37	0.45	42	0.54	44	11-23-33
	700	2005	0.34	41	0.62	46	0.74	48	12-25-36
	800	2292	0.44	45	0.80	49	0.95	51	13-27-38
ADN-10	300	550	0.02	<20	0.04	<20	0.06	22	4-10-19
	400	733	0.04	<20	0.08	23	0.12	27	6-13-26
	600	1100	0.09	29	0.18	33	0.26	37	9-18-33
	800	1466	0.14	37	0.32	41	0.46	44	12-24-38
	1000	1833	0.25	42	0.49	46	0.72	49	15-30-43
	1200	2200	0.35	48	0.71	52	1.04	55	18-36-52
	1400	2566	0.48	51	0.96	55	1.42	58	21-42-61
ADN-12	400	509	0.02	<20	0.03	<20	0.04	<20	5-11-22
	700	891	0.05	<20	0.10	22	0.13	25	9-19-36
	1000	1273	0.11	28	0.20	33	0.27	35	13-27-43
	1300	1655	0.19	35	0.34	40	0.46	42	16-34-49
	1600	2037	0.28	41	0.51	45	0.70	47	18-38-54
	1900	2419	0.39	46	0.72	50	1.00	52	20-42-59
	2200	2800	0.53	50	0.97	54	1.33	56	22-45-63
ADNA-06	100	573	0.03	<20	0.05	<20	0.06	<20	3-8-16
	150	859	0.06	20	0.11	26	0.14	29	5-12-22
	200	1146	0.11	28	0.20	33	0.24	35	8-16-27
	250	1432	0.17	33	0.32	38	0.38	40	10-20-30
	300	1719	0.25	37	0.45	42	0.54	44	11-23-33
	350	2005	0.34	41	0.62	46	0.74	48	12-25-36
	400	2292	0.44	45	0.80	49	0.95	51	13-27-38
	500	2566	0.53	50	0.97	54	1.33	56	22-45-63
ADNA-08	200	550	0.02	<20	0.04	<20	0.06	22	4-10-19
	300	733	0.04	<20	0.08	23	0.12	27	6-13-26
	400	1100	0.09	29	0.18	33	0.26	37	9-18-33
	500	1466	0.14	37	0.32	41	0.46	44	12-24-38
	600	1833	0.25	42	0.49	46	0.72	49	15-30-43
	700	2200	0.35	48	0.71	52	1.04	55	18-36-52
	800	2566	0.48	51	0.96	55	1.42	58	21-42-61
	1000	2800	0.53	50	0.97	54	1.33	56	22-45-63
ADNA-10	300	509	0.02	<20	0.03	<20	0.04	<20	5-11-22
	400	891	0.05	<20	0.10	22	0.13	25	9-19-36
	500	1273	0.11	28	0.20	33	0.27	35	13-27-43
	600	1655	0.19	35	0.34	40	0.46	42	16-34-49
	800	2037	0.28	41	0.51	45	0.70	47	18-38-54
	1000	2419	0.39	46	0.72	50	1.00	52	20-42-59
	1200	2800	0.53	50	0.97	54	1.33	56	22-45-63
	1400	2566	0.48	51	0.96	55	1.42	58	21-42-61
ADNA-12	400	509	0.02	<20	0.03	<20	0.04	<20	5-11-22
	700	891	0.05	<20	0.10	22	0.13	25	9-19-36
	1000	1273	0.11	28	0.20	33	0.27	35	13-27-43
	1300	1655	0.19	35	0.34	40	0.46	42	16-34-49
	1600	2037	0.28	41	0.51	45	0.70	47	18-38-54
	1900	2419	0.39	46	0.72	50	1.00	52	20-42-59
	2200	2800	0.53	50	0.97	54	1.33	56	22-45-63

performance data based on ASHRAE 70-06

Airflow CFM: Standard air density and isothermal conditions.

Noise Criteria: Noise criteria [NC] curve which is not exceeded with a Room Attenuation of 10db and based on Sound Power Level Re: 10-12 watts.

Pressure Static: Inches of water gauge required [Ps].

Projection: Projection distance [THROW] in feet from the nozzle discharge at which the maximum velocity has been reduced to specified terminal velocity [Vt].

Nozzle Velocity: Nozzle Discharge Velocity in feet per minute [fpm].

Terminal Velocity: Maximum velocity [Vt] in feet per minute at the specified distance from the outlet face [THROW] 400 fpm, 200 fpm, and 100 fpm respectively.