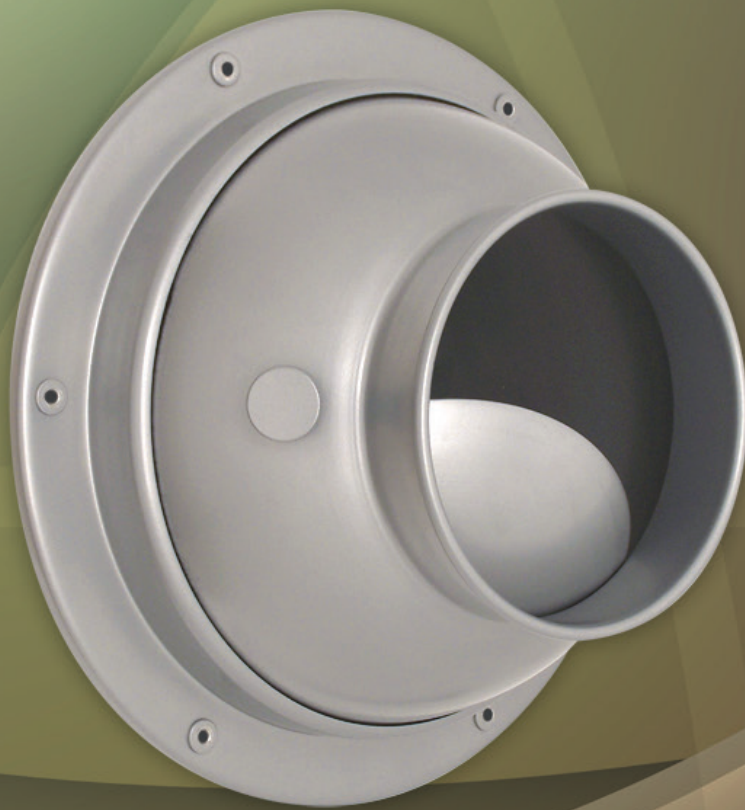


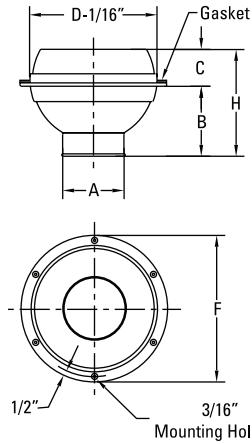
AIRCONCEPTS

AIR DISTRIBUTION PRODUCTS

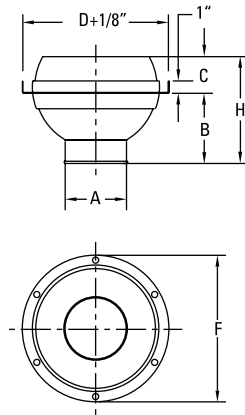


APL SERIES

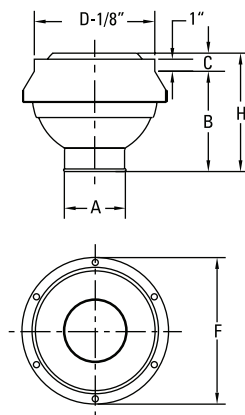
APL
Wall/Ceiling Mount



APL-RD
Exposed Round Duct



APL-RR
Exposed Round Duct



APL Dimensions in Inches

| MODEL | SIZE | A | B | C | D | F | H |
|--------|------|--------|--------|--------|-------|----|---------|
| APL-03 | 3 | 1 5/8 | 1 3/4 | 15/16 | 3 1/8 | 5 | 2 11/16 |
| APL-04 | 4 | 2 | 2 9/16 | 3/4 | 4 | 6 | 3 5/16 |
| APL-06 | 6 | 3 | 3 1/16 | 1 7/16 | 6 | 8 | 4 1/2 |
| APL-08 | 8 | 4 3/8 | 4 1/4 | 1 3/4 | 8 | 10 | 6 |
| APL-10 | 10 | 5 3/4 | 5 1/2 | 2 7/8 | 10 | 12 | 8 3/8 |
| APL-12 | 12 | 7 3/8 | 6 | 3 | 12 | 14 | 9 |
| APL-14 | 14 | 8 5/8 | 7 1/8 | 4 1/8 | 14 | 16 | 11 1/4 |
| APL-16 | 16 | 9 3/4 | 8 1/4 | 4 3/4 | 16 | 18 | 13 |
| APL-18 | 18 | 10 1/2 | 9 1/2 | 4 1/4 | 18 | 20 | 13 3/4 |
| APL-20 | 20 | 12 3/8 | 10 7/8 | 4 7/8 | 20 | 22 | 15 3/4 |

MOUNTING HOLES 3-[3"-4"] 4-[6"-8"] 6-[10"-16"] 8-[18"-20"]

APL-RD Dimensions in Inches

| MODEL | SIZE | A | B | C | D | F | H |
|-----------|------|--------|--------|--------|----|----|--------|
| APL-04-RD | 4 | 2 | 2 9/16 | 3/4 | 6 | 6 | 3 5/16 |
| APL-06-RD | 6 | 3 | 3 1/16 | 1 7/16 | 8 | 8 | 4 1/2 |
| APL-08-RD | 8 | 4 3/8 | 4 1/4 | 1 3/4 | 10 | 10 | 6 |
| APL-10-RD | 10 | 5 3/4 | 5 1/2 | 2 7/8 | 12 | 12 | 8 3/8 |
| APL-12-RD | 12 | 7 3/8 | 6 | 3 | 14 | 14 | 9 |
| APL-14-RD | 14 | 8 5/8 | 7 1/8 | 4 1/8 | 16 | 16 | 11 1/4 |
| APL-16-RD | 16 | 9 3/4 | 8 1/4 | 4 3/4 | 18 | 18 | 13 |
| APL-18-RD | 18 | 10 1/2 | 9 1/2 | 4 1/4 | 20 | 20 | 13 3/4 |
| APL-20-RD | 20 | 12 3/8 | 10 7/8 | 4 7/8 | 22 | 22 | 15 3/4 |

APL-RR Dimensions in Inches

| MODEL | SIZE | A | B | C | D | F | H |
|-----------|------|--------|--------|-------|----|----|--------|
| APL-04-RR | 4 | 2 | 5 1/16 | 1 | 4 | 6 | 6 1/16 |
| APL-06-RR | 6 | 3 | 5 9/16 | 1 | 6 | 8 | 6 9/16 |
| APL-08-RR | 8 | 4 3/8 | 6 3/4 | 1 | 8 | 10 | 7 3/4 |
| APL-10-RR | 10 | 5 3/4 | 8 | 1 | 10 | 12 | 9 |
| APL-12-RR | 12 | 7 3/8 | 8 1/2 | 1 | 12 | 14 | 9 1/2 |
| APL-14-RR | 14 | 8 5/8 | 9 5/8 | 1 5/8 | 14 | 16 | 11 1/4 |
| APL-16-RR | 16 | 9 3/4 | 10 3/4 | 2 1/4 | 16 | 18 | 13 |
| APL-18-RR | 18 | 10 1/2 | 12 | 1 3/4 | 18 | 20 | 13 3/4 |
| APL-20-RR | 20 | 12 3/8 | 13 3/8 | 2 3/8 | 20 | 22 | 15 3/4 |

Adjustability

- Easy Finger Tip Adjustment
- Directional Air Pattern Control:
- 70° Degree Global Rotation
- ±35° Degree Deflection
- 360° Degree Rotation

Construction

- Aluminum
- Foam Gasket

Finishes

- Standard: #52 White powder coat
- Optional standard: #00 Mill
- #10 Clear anodized
- #12 Anodized powder coat
- #42 Gloss black powder coat
- #43 Flat black powder coat
- #62 Grey prime powder coat
- #72 Silver metallic powder coat
- Custom colors available

APL-A

APL-A Dimensions in Inches

| MODEL | SIZE | A | B | C | D | F | H |
|----------------|------|--------------------------------|--------------------------------|--------------------------------|-------------|----|--------------------------------|
| APL-04A | 4 | 2 | 2 ⁹ / ₁₆ | 3/4 | 4 | 6 | 3 ⁵ / ₁₆ |
| APL-06A | 6 | 3 | 3 ¹ / ₁₆ | 1 ⁷ / ₁₆ | 6 | 8 | 4 ¹ / ₂ |
| APL-08A | 8 | 4 ³ / ₈ | 4 ¹ / ₄ | 1 ³ / ₄ | 8 | 10 | 6 |
| APL-10A | 10 | 5 ³ / ₄ | 5 ¹ / ₂ | 2 ⁷ / ₈ | 10 | 12 | 8 ³ / ₈ |
| APL-12A | 12 | 7 ³ / ₈ | 6 | 3 | 12 | 14 | 9 |
| APL-14A | 14 | 8 ⁵ / ₈ | 7 ¹ / ₈ | 4 ¹ / ₈ | 14 | 16 | 11 ¹ / ₄ |
| APL-16A | 16 | 9 ³ / ₄ | 8 ¹ / ₄ | 4 ³ / ₄ | 16 | 18 | 13 |
| APL-18A | 18 | 10 ¹ / ₂ | 9 ¹ / ₂ | 4 ¹ / ₄ | 18 | 20 | 13 ³ / ₄ |
| APL-20A | 20 | 12 ³ / ₈ | 10 ⁷ / ₈ | 4 ⁷ / ₈ | 20 | 22 | 15 ³ / ₄ |
| MOUNTING HOLES | | 3-[4"] | 4-[6"-8"] | 6-[10"-16"] | 8-[18"-20"] | | |

APL-A-RD Dimensions in Inches

| MODEL | SIZE | A | B | C | D | F | H |
|------------|------|--------------------------------|--------------------------------|--------------------------------|----|----|--------------------------------|
| APL-04A-RD | 4 | 2 | 2 ⁹ / ₁₆ | 3/4 | 6 | 6 | 3 ⁵ / ₁₆ |
| APL-06A-RD | 6 | 3 | 3 ¹ / ₁₆ | 1 ⁷ / ₁₆ | 8 | 8 | 4 ¹ / ₂ |
| APL-08A-RD | 8 | 4 ³ / ₈ | 4 ¹ / ₄ | 1 ³ / ₄ | 10 | 10 | 6 |
| APL-10A-RD | 10 | 5 ³ / ₄ | 5 ¹ / ₂ | 2 ⁷ / ₈ | 12 | 12 | 8 ³ / ₈ |
| APL-12A-RD | 12 | 7 ³ / ₈ | 6 | 3 | 14 | 14 | 9 |
| APL-14A-RD | 14 | 8 ⁵ / ₈ | 7 ¹ / ₈ | 4 ¹ / ₈ | 16 | 16 | 11 ¹ / ₄ |
| APL-16A-RD | 16 | 9 ³ / ₄ | 8 ¹ / ₄ | 4 ³ / ₄ | 18 | 18 | 13 |
| APL-18A-RD | 18 | 10 ¹ / ₂ | 9 ¹ / ₂ | 4 ¹ / ₄ | 20 | 20 | 13 ³ / ₄ |
| APL-20A-RD | 20 | 12 ³ / ₈ | 10 ⁷ / ₈ | 4 ⁷ / ₈ | 22 | 22 | 15 ³ / ₄ |

APL-A-RR Dimensions in Inches

| MODEL | SIZE | A | B | C | D | F | H |
|------------|------|--------------------------------|--------------------------------|-------------------------------|----|----|--------------------------------|
| APL-04A-RR | 4 | 2 | 5 ¹ / ₁₆ | 1 | 4 | 6 | 6 ¹ / ₁₆ |
| APL-06A-RR | 6 | 3 | 5 ⁹ / ₁₆ | 1 | 6 | 8 | 6 ⁹ / ₁₆ |
| APL-08A-RR | 8 | 4 ³ / ₈ | 6 ³ / ₄ | 1 | 8 | 10 | 7 ³ / ₄ |
| APL-10A-RR | 10 | 5 ³ / ₄ | 8 | 1 | 10 | 12 | 9 |
| APL-12A-RR | 12 | 7 ³ / ₈ | 8 ¹ / ₂ | 1 | 12 | 14 | 9 ¹ / ₂ |
| APL-14A-RR | 14 | 8 ⁵ / ₈ | 9 ⁵ / ₈ | 1 ⁵ / ₈ | 14 | 16 | 11 ¹ / ₄ |
| APL-16A-RR | 16 | 9 ³ / ₄ | 10 ³ / ₄ | 2 ¹ / ₄ | 16 | 18 | 13 |
| APL-18A-RR | 18 | 10 ¹ / ₂ | 12 | 1 ³ / ₄ | 18 | 20 | 13 ³ / ₄ |
| APL-20A-RR | 20 | 12 ³ / ₈ | 13 ³ / ₈ | 2 ³ / ₈ | 20 | 22 | 15 ³ / ₄ |

Adjustability

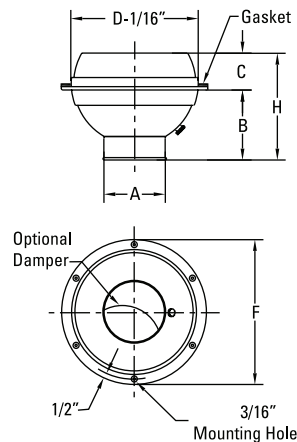
Easy Finger Tip Adjustment
 Directional Air Pattern Control:
 70° Degree Global Rotation
 ±35° Degree Deflection
 360° Degree Rotation

Construction

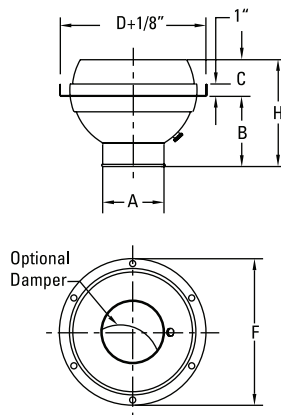
Stainless Steel Damper Hardware
 Aluminum
 Foam Gasket

Finishes

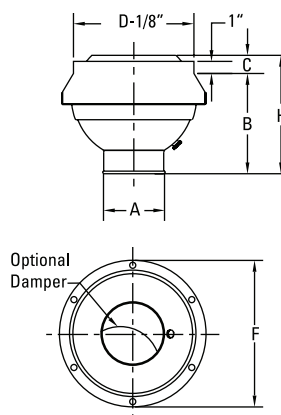
Standard: #52 White powder coat
 Optional standard: #00 Mill
 #10 Clear anodized
 #12 Anodized powder coat
 #42 Gloss black powder coat
 #43 Flat black powder coat
 #62 Grey prime powder coat
 #72 Silver metallic powder coat
 Custom colors available



APL-A
Wall/Ceiling Mount



APL-A-RD
Exposed Round Duct



APL-A-RR
Exposed Round Duct

| MODEL | Nozzle Velocity (FPM) | 1000 | 1500 | 2000 | 2500 | 3000 | 3500 | 4000 |
|--------|-----------------------|----------|----------|-----------|-----------|-----------|------------|------------|
| APL-03 | CFM | 14 | 22 | 29 | 36 | 43 | 50 | 58 |
| | Static Pressure | 0.03 | 0.07 | 0.13 | 0.20 | 0.28 | 0.39 | 0.50 |
| | NC | <15 | <15 | <15 | 19 | 23 | 26 | 30 |
| | Projection | 2-4-8 | 3-6-13 | 4-8-15 | 5-11-16 | 6-12-17 | 7-13-20 | 8-14-21 |
| APL-04 | CFM | 22 | 33 | 44 | 55 | 66 | 77 | 88 |
| | Static Pressure | 0.03 | 0.07 | 0.13 | 0.20 | 0.28 | 0.39 | 0.50 |
| | NC | <15 | <15 | <15 | 19 | 23 | 26 | 30 |
| | Projection | 3-6-12 | 4-8-17 | 6-12-23 | 8-16-24 | 9-18-27 | 10-21-30 | 12-22-32 |
| APL-06 | CFM | 49 | 74 | 98 | 123 | 147 | 172 | 196 |
| | Static Pressure | 0.05 | 0.12 | 0.22 | 0.34 | 0.49 | 0.66 | 0.86 |
| | NC | <15 | <15 | 15 | 21 | 25 | 29 | 33 |
| | Projection | 4-8-16 | 6-12-23 | 8-16-27 | 10-20-30 | 12-21-32 | 14-25-36 | 16-26-38 |
| APL-08 | CFM | 104 | 157 | 209 | 261 | 313 | 365 | 418 |
| | Static Pressure | 0.06 | 0.14 | 0.24 | 0.38 | 0.53 | 0.70 | 0.92 |
| | NC | <15 | <15 | 17 | 24 | 30 | 35 | 38 |
| | Projection | 6-11-23 | 8-17-34 | 11-23-39 | 14-28-44 | 17-31-46 | 20-35-52 | 23-38-55 |
| APL-10 | CFM | 180 | 270 | 361 | 451 | 541 | 631 | 721 |
| | Static Pressure | 0.07 | 0.15 | 0.25 | 0.39 | 0.56 | 0.74 | 0.96 |
| | NC | <15 | <15 | 21 | 29 | 35 | 40 | 45 |
| | Projection | 7-15-30 | 11-22-45 | 15-30-51 | 19-37-57 | 22-41-61 | 26-47-69 | 30-50-72 |
| APL-12 | CFM | 297 | 445 | 593 | 742 | 890 | 1038 | 1187 |
| | Static Pressure | 0.07 | 0.15 | 0.26 | 0.40 | 0.58 | 0.78 | 1.01 |
| | NC | <15 | 15 | 24 | 32 | 38 | 44 | 47 |
| | Projection | 10-19-38 | 14-29-57 | 19-38-65 | 24-48-74 | 29-52-79 | 33-60-88 | 38-64-93 |
| APL-14 | CFM | 406 | 609 | 811 | 1014 | 1217 | 1420 | 1623 |
| | Static Pressure | 0.07 | 0.15 | 0.26 | 0.41 | 0.58 | 0.79 | 1.02 |
| | NC | <15 | 15 | 25 | 33 | 39 | 44 | 48 |
| | Projection | 11-22-45 | 17-33-67 | 22-45-76 | 28-56-86 | 33-61-91 | 39-70-103 | 45-75-108 |
| APL-16 | CFM | 518 | 778 | 1036 | 1296 | 1555 | 1815 | 2074 |
| | Static Pressure | 0.07 | 0.14 | 0.26 | 0.41 | 0.58 | 0.80 | 1.03 |
| | NC | <15 | 16 | 26 | 33 | 39 | 44 | 49 |
| | Projection | 13-25-50 | 19-38-76 | 25-50-86 | 32-63-97 | 38-69-103 | 44-79-117 | 50-84-122 |
| APL-18 | CFM | 601 | 902 | 1202 | 1503 | 1804 | 2105 | 2406 |
| | Static Pressure | 0.06 | 0.13 | 0.24 | 0.37 | 0.54 | 0.74 | 0.96 |
| | NC | <15 | 16 | 26 | 33 | 39 | 44 | 49 |
| | Projection | 14-27-54 | 20-41-81 | 27-54-105 | 34-68-110 | 41-74-111 | 47-85-126 | 54-91-132 |
| APL-20 | CFM | 835 | 1253 | 1670 | 2088 | 2506 | 2924 | 3341 |
| | Static Pressure | 0.06 | 0.12 | 0.22 | 0.34 | 0.49 | 0.68 | 0.88 |
| | NC | <15 | 17 | 27 | 34 | 40 | 46 | 51 |
| | Projection | 16-32-64 | 24-48-96 | 32-64-110 | 40-80-123 | 48-87-131 | 56-100-148 | 64-107-155 |

performance data based on ASHRAE 70-06

Airflow CFM: Standard air density and isothermal conditions.

Noise Criteria: Noise criteria [NC] curve which is not exceeded with a Room Attenuation of 10db and based on Sound Power LevelRe: 10-12 watts.

Static Pressure: Inches of water gauge required.

Projection: Projection distance [THROW] in feet from the Nozzle discharge at which the maximum velocity has been reduced to specified terminal velocity [Vt].

Nozzle Velocity: Nozzle Discharge Velocity in feet per minute [fpm].

Terminal Velocity: Maximum velocity [Vt] in feet per minute at the specified distance from the outlet face [THROW] 400 fpm, 200 fpm, and 100 fpm respectively.

