

AIRCONCEPTS

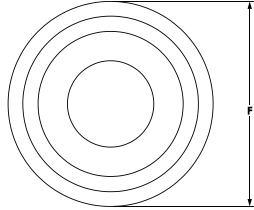
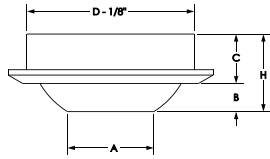
AIR DISTRIBUTION PRODUCTS



HV SERIES

HVA

Wall/Ceiling Mount

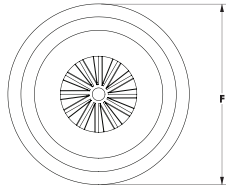
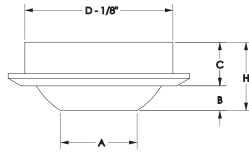


HVA Dimensions in Inches

MODEL	SIZE	A	B	C	D	F	H
HVA-08	8	3 1/4	1	2 9/16	8	10 1/4	3 9/16
HVA-10	10	4 5/8	1 5/8	2 3/4	10	12 1/4	4 3/8
HVA-12	12	6	2	3 1/2	12	14 1/4	5 1/2
HVA-14	14	7	2 3/8	3 11/16	14	16 1/4	6 1/16
HVA-16	16	8	2 7/16	4 1/2	16	18 1/4	6 15/16
HVA-20	20	10	3 3/16	5 1/2	20	22 1/4	8 11/16

HVT

Wall/Ceiling Mount

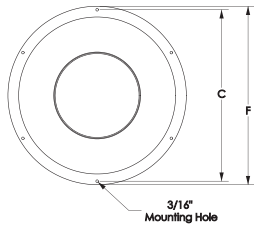
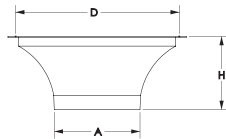


HVT Dimensions in Inches

MODEL	SIZE	A	B	C	D	F	H
HVT-08	8	3 1/4	1	2 9/16	8	10 1/4	3 9/16
HVT-10	10	4 5/8	1 5/8	2 3/4	10	12 1/4	4 3/8
HVT-12	12	6	2	3 1/2	12	14 1/4	5 1/2
HVT-14	14	7	2 3/8	3 11/16	14	16 1/4	6 1/16
HVT-16	16	8	2 7/16	4 1/2	16	18 1/4	6 15/16
HVT-20	20	10	3 3/16	5 1/2	20	22 1/4	8 11/16

HVN

Wall/Ceiling Mount



HVN Dimensions in Inches

MODEL	SIZE	A	C	D	F	H
HVN-08	8	3 1/4	8 1/4	8	8 3/4	3 1/2
HVN-10	10	4 5/8	10 1/4	10	10 3/4	4 7/8
HVN-12	12	6	12 1/4	12	12 3/4	5 1/4
HVN-14	14	7	14 1/4	14	14 3/4	6 1/16
HVN-16	16	8	16 1/4	16	16 3/4	6 15/16
HVN-20	20	10	20 1/4	20	20 3/4	8 5/8

Adjustability

- Easy Finger Tip Adjustment
- Directional Air Pattern Control:
- 70° Degree Global Rotation
- Minimum ±30° Deflection
- 360° Global Rotation (HVN non-adjustable)

Construction

Aluminum

Finishes

- Standard: #52 White powder coat
- Optional standard: #00 Mill
- #12 Anodized powder coat
- #42 Gloss black powder coat
- #43 Flat black powder coat
- #62 Grey prime powder coat
- #72 Silver metallic powder coat
- Custom colors available

MODEL	Nozzle Velocity (FPM)	1000	1500	1750	2000	2250	2500	3000
HVA-08	CFM	58	87	101.5	116	130.5	145	174
	Static Pressure	0.06	0.13	0.18	0.24	0.30	0.37	0.53
	NC	<15	<15	<15	<15	17	19	23
	Projection	4-8-16	6-12-24	7-14-28	8-16-32	9-18-36	10-20-40	12-24-48
HVA-10	CFM	136	204	238	272	306	340	408
	Static Pressure	0.06	0.13	0.18	0.24	0.30	0.37	0.53
	NC	<15	<15	<15	15	17	20	24
	Projection	6-12-24	8-17-33	10-20-38	11-22-40	13-26-44	14-29-48	16-34-54
HVA-12	CFM	196	294	343	392	441	490	588
	Static Pressure	0.06	0.13	0.18	0.24	0.30	0.37	0.53
	NC	<15	<15	<15	16	18	21	25
	Projection	8-16-32	11-22-44	13-26-47	15-30-50	17-34-53	19-38-56	22-44-60
HVA-14	CFM	267	401	467	534	601	668	801
	Static Pressure	0.06	0.13	0.18	0.24	0.30	0.37	0.53
	NC	<15	<15	15	18	20	22	26
	Projection	9-19-38	13-27-53	15-31-56	18-36-60	20-41-64	23-46-68	27-51-74
HVA-16	CFM	349	524	611	698	785	873	1047
	Static Pressure	0.06	0.13	0.18	0.24	0.30	0.37	0.53
	NC	<15	<15	16	19	21	24	27
	Projection	11-22-44	16-32-64	18-37-67	21-42-71	24-48-77	27-54-82	32-59-88
HVA-20	CFM	545	818	955	1091	1227	1364	1636
	Static Pressure	0.07	0.14	0.20	0.26	0.33	0.41	0.58
	NC	<15	<15	17	20	22	26	29
	Projection	12-24-48	18-36-72	21-42-82	24-48-92	28-56-104	31-62-114	36-72-130

performance data based on ASHRAE 70-06

Airflow CFM: Standard air density and isothermal conditions.

Noise Criteria: Noise criteria [NC] curve which is not exceeded with a Room Attenuation of 10db and based on Sound Power Level Re: 10-12 watts.

Static Pressure: Inches of water gauge required.

Projection: Projection distance [THROW] in feet from the Nozzle discharge at which the maximum velocity has been reduced to specified terminal velocity [Vt].

Nozzle Velocity: Nozzle Discharge Velocity in feet per minute [fpm].

Terminal Velocity: Maximum velocity [Vt] in feet per minute at the specified distance from the outlet face [THROW] 400 fpm, 200 fpm, and 100 fpm respectively.

MODEL	Nozzle Velocity (FPM)	1000	1500	1750	2000	2250	2500
HVT-08	CFM	58	87	101.5	116	130.5	145
	Static Pressure	0.08	0.19	0.26	0.35	0.44	0.55
	NC	17	26	29	33	36	38
	Projection	2-4-8	3-6-12	4-7-14	4-8-16	5-9-18	5-10-20
HVT-10	CFM	136	204	238	272	306	340
	Static Pressure	0.10	0.21	0.29	0.38	0.48	0.58
	NC	20	27	33	36	39	41
	Projection	3-6-12	4-8-16	5-10-19	6-11-20	7-13-22	7-15-24
HVT-12	CFM	196	294	343	392	441	490
	Static Pressure	0.11	0.23	0.33	0.42	0.52	0.64
	NC	22	31	35	38	41	43
	Projection	4-8-16	6-11-22	7-13-23	8-15-25	8-17-26	10-19-28
HVT-14	CFM	267	401	467	534	601	668
	Static Pressure	0.11	0.26	0.35	0.46	0.58	0.72
	NC	23	32	36	39	41	43
	Projection	5-10-19	6-13-26	8-15-28	9-18-30	10-20-32	11-23-34
HVT-16	CFM	349	524	611	698	785	873
	Static Pressure	0.14	0.32	0.42	0.55	0.69	0.87
	NC	24	34	37	40	43	45
	Projection	6-11-22	8-16-32	9-18-33	10-21-35	12-24-38	14-27-41
HVT-20	CFM	545	818	955	1091	1227	1364
	Static Pressure	0.16	0.36	0.49	0.63	0.80	1.00
	NC	25	36	39	42	45	47
	Projection	6-12-24	9-18-36	10-21-41	12-24-46	14-28-52	15-31-57

performance data based on ASHRAE 70-06

Airflow CFM: Standard air density and isothermal conditions.

Noise Criteria: Noise criteria [NC] curve which is not exceeded with a Room Attenuation of 10db and based on Sound Power Level Re: 10-12 watts.

Static Pressure: Inches of water gauge required.

Projection: Projection distance [THROW] in feet from the Nozzle discharge at which the maximum velocity has been reduced to specified terminal velocity [Vt].

Nozzle Velocity: Nozzle Discharge Velocity in feet per minute [fpm].

Terminal Velocity: Maximum velocity [Vt] in feet per minute at the specified distance from the outlet face [THROW] 400 fpm, 200 fpm, and 100 fpm respectively.

MODEL	Nozzle Velocity (FPM)	1000	1500	1750	2000	2250	2500	3000
HVN-08	CFM	58	87	101.5	116	130.5	145	174
	Static Pressure	0.06	0.13	0.18	0.24	0.30	0.37	0.53
	NC	<15	<15	<15	<15	17	19	23
	Projection	4-8-16	6-12-24	7-14-28	8-16-32	9-18-36	10-20-40	12-24-48
HVN-10	CFM	136	204	238	272	306	340	408
	Static Pressure	0.06	0.13	0.18	0.24	0.30	0.37	0.53
	NC	<15	<15	<15	15	17	20	24
	Projection	6-12-24	8-17-33	10-20-38	11-22-40	13-26-44	14-29-48	16-34-54
HVN-12	CFM	196	294	343	392	441	490	588
	Static Pressure	0.06	0.13	0.18	0.24	0.30	0.37	0.53
	NC	<15	<15	<15	16	18	21	25
	Projection	8-16-32	11-22-44	13-26-47	15-30-50	17-34-53	19-38-56	22-44-60
HVN-14	CFM	267	401	467	534	601	668	801
	Static Pressure	0.06	0.13	0.18	0.24	0.30	0.37	0.53
	NC	<15	<15	15	18	20	22	26
	Projection	9-19-38	13-27-53	15-31-56	18-36-60	20-41-64	23-46-68	27-51-74
HVN-16	CFM	349	524	611	698	785	873	1047
	Static Pressure	0.06	0.13	0.18	0.24	0.30	0.37	0.53
	NC	<15	<15	16	19	21	24	27
	Projection	11-22-44	16-32-64	18-37-67	21-42-71	24-48-77	27-54-82	32-59-88
HVN-20	CFM	545	818	955	1091	1227	1364	1636
	Static Pressure	0.07	0.14	0.20	0.26	0.33	0.41	0.58
	NC	<15	<15	17	20	22	26	29
	Projection	12-24-48	18-36-72	21-42-82	24-48-92	28-56-104	31-62-114	36-72-130

performance data based on ASHRAE 70-06

Airflow CFM: Standard air density and isothermal conditions.

Noise Criteria: Noise criteria [NC] curve which is not exceeded with a Room Attenuation of 10db and based on Sound Power Level Re: 10-12 watts.

Static Pressure: Inches of water gauge required.

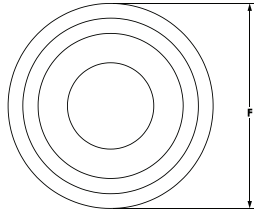
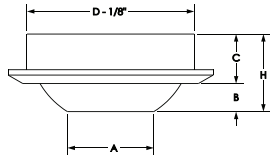
Projection: Projection distance [THROW] in feet from the Nozzle discharge at which the maximum velocity has been reduced to specified terminal velocity [Vt].

Nozzle Velocity: Nozzle Discharge Velocity in feet per minute [fpm].

Terminal Velocity: Maximum velocity [Vt] in feet per minute at the specified distance from the outlet face [THROW] 400 fpm, 200 fpm, and 100 fpm respectively.

HVAM

HVAM
Wall/Ceiling Mount



HVA Dimensions in Inches

MODEL	SIZE	A	B	C	D	F	H
HVAM-08	8	3 1/4	1	9 3/4	8	10 1/4	10 3/4
HVAM-10	10	4 5/8	1 5/8	9 3/4	10	12 1/4	11 3/8
HVAM-12	12	6	2	10 1/2	12	14 1/4	12 1/2
HVAM-14	14	7	2 3/8	10 1/2	14	16 1/4	12 7/8
HVAM-16	16	8	2 7/16	12 5/8	16	18 1/4	15 1/16
HVAM-20	20	10	3 3/16	14 1/8	20	22 1/4	17 5/16

MODEL	Nozzle Velocity (FPM)	1000	1500	1750	2000	2250	2500	3000
HVAM-08	CFM	58	87	101.5	116	130.5	145	174
	Static Pressure	0.06	0.13	0.18	0.24	0.30	0.37	0.53
	NC	<15	<15	<15	<15	17	19	23
	Projection	4-8-16	6-12-24	7-14-28	8-16-32	9-18-36	10-20-40	12-24-48
HVAM-10	CFM	136	204	238	272	306	340	408
	Static Pressure	0.06	0.13	0.18	0.24	0.30	0.37	0.53
	NC	<15	<15	<15	15	17	20	24
	Projection	6-12-24	8-17-33	10-20-38	11-22-40	13-26-44	14-29-48	16-34-54
HVAM-12	CFM	196	294	343	392	441	490	588
	Static Pressure	0.06	0.13	0.18	0.24	0.30	0.37	0.53
	NC	<15	<15	<15	16	18	21	25
	Projection	8-16-32	11-22-44	13-26-47	15-30-50	17-34-53	19-38-56	22-44-60
HVAM-14	CFM	267	401	467	534	601	668	801
	Static Pressure	0.06	0.13	0.18	0.24	0.30	0.37	0.53
	NC	<15	<15	15	18	20	22	26
	Projection	9-19-38	13-27-53	15-31-56	18-36-60	20-41-64	23-46-68	27-51-74
HVAM-16	CFM	349	524	611	698	785	873	1047
	Static Pressure	0.06	0.13	0.18	0.24	0.30	0.37	0.53
	NC	<15	<15	16	19	21	24	27
	Projection	11-22-44	16-32-64	18-37-67	21-42-71	24-48-77	27-54-82	32-59-88
HVAM-20	CFM	545	818	955	1091	1227	1364	1636
	Static Pressure	0.07	0.14	0.20	0.26	0.33	0.41	0.58
	NC	<15	<15	17	20	22	26	29
	Projection	12-24-48	18-36-72	21-42-82	24-48-92	28-56-104	31-62-114	36-72-130

performance data based on ASHRAE 70-06

Airflow CFM: Standard air density and isothermal conditions.

Noise Criteria: Noise criteria [NC] curve which is not exceeded with a Room Attenuation of 10db and based on Sound Power Level Re: 10-12 watts.

Static Pressure: Inches of water gauge required.

Projection: Projection distance [THROW] in feet from the Nozzle discharge at which the maximum velocity has been reduced to specified terminal velocity [Vt].

Nozzle Velocity: Nozzle Discharge Velocity in feet per minute [fpm].

Terminal Velocity: Maximum velocity [Vt] in feet per minute at the specified distance from the outlet face [THROW] 400 fpm, 200 fpm, and 100 fpm respectively.