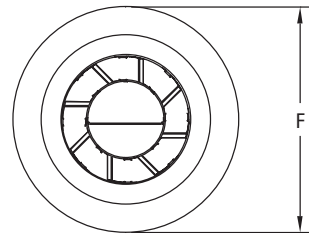
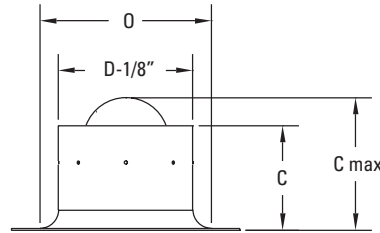


## Vortex Diffuser



### High Aspiration Air Outlet

- Distinctive Round Design
- Suitable for Both Exposed Duct and Ceiling Mounted Applications
- Suitable for Both Heating and Cooling Applications
- Radial Jet Dispersion - Vortex Generators Spin the Air in a Uniform Horizontal 360° Discharge Pattern

### Adjustability

- Adjusted from Horizontal to Vertical Discharge by Opening the Center-Mounted Diverter Plate

MODEL	C	C Max	D	F	O
VTX-06	4-1/4	5-1/2	6	10	7-1/2
VTX-08	5	6-7/8	8	12	9-1/2
VTX-10	5-1/2	7-7/8	10	15	11-7/8
VTX-12	6-1/4	9-1/4	12	17	13-7/8
VTX-14	8	11-1/2	14	20	17-7/8
VTX-16	9	13-1/4	16	23	20-7/8
VTX-18	9-9/16	14-1/8	18	26	23

(Inches measured to the nearest 1/16")

### Standard Material

- Heavy Gauge Aluminum

### Notes

- Frame Slides Cleanly Into Ductwork

### Options

- Custom Finish \_\_\_\_\_

### Standard Finishes

- #12 anodized powder coat
- #42 gloss black powder coat
- #43 flat black powder coat
- #52 white powder coat
- #62 grey primer powder coat (on field painting)
- #72 silver metallic powder coat
- #99 custom color / color match (paint chip needed)

<b>Project :</b>	<h1>VTX Series</h1> <p>Vortex Diffuser</p>	
<b>Architect :</b>		
<b>Engineer :</b>		
<b>Contractor :</b>	<b>Form # : 40050S</b>	
<b>Submitted By :</b>	<b>Date :</b>	<b>Drawn By : MH November 2004</b>