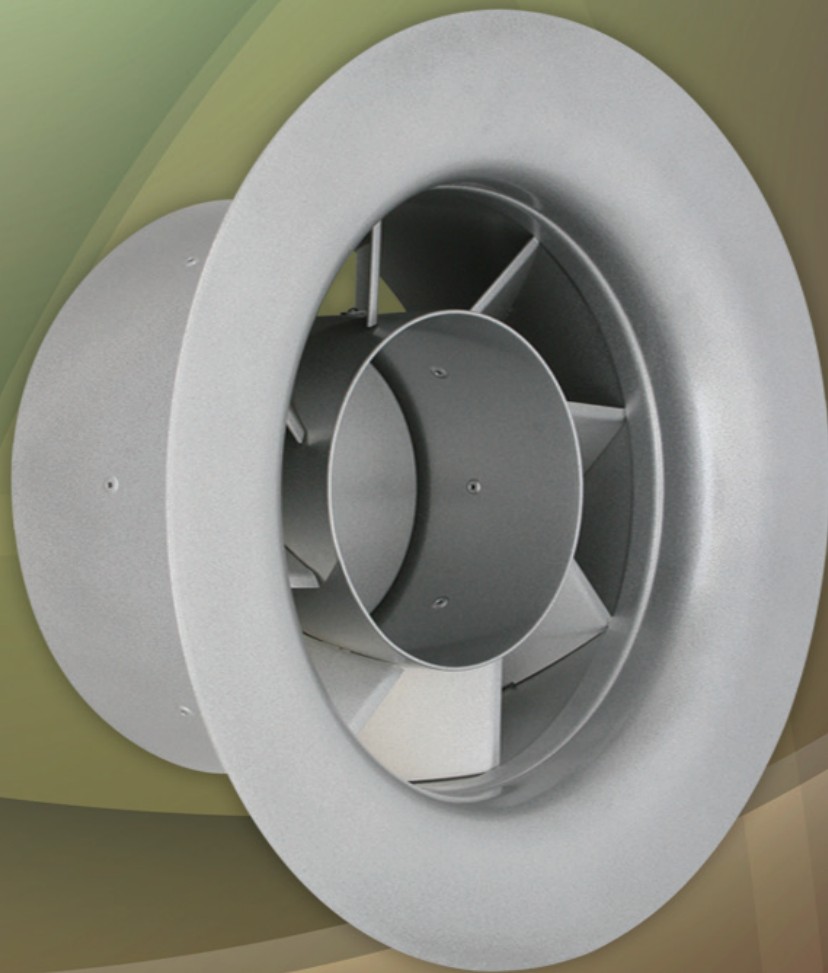




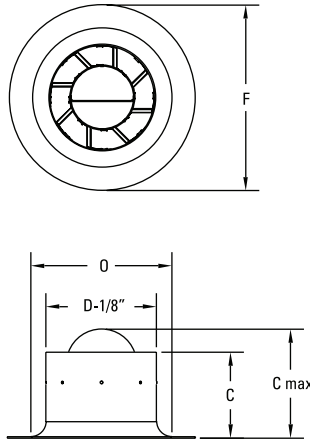
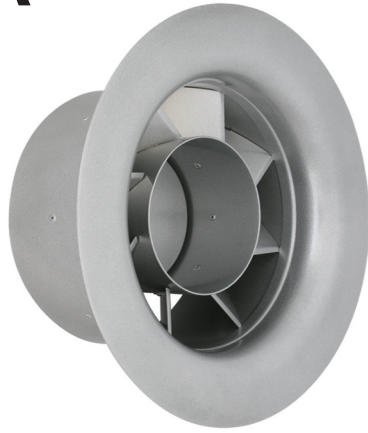
AIRCONCEPTS

AIR DISTRIBUTION PRODUCTS



VTX SERIES

VTX

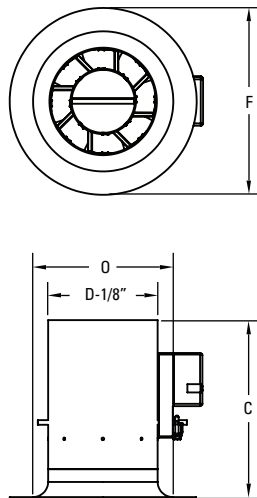


The **Vortex** provides the versatility of a radial jet dispersion and generators that spin the air in a uniform horizontal 360° degree discharge pattern.

VTX Dimensions in Inches

MODEL	SIZE	C	C-MAX	D	F	O
VTX-06	6	4 1/4	5 1/2	6	10	7 1/2
VTX-08	8	5	6 7/8	8	12	9 1/2
VTX-10	10	5 1/2	7 7/8	10	15	11 7/8
VTX-12	12	6 1/4	9 1/4	12	17	13 7/8
VTX-14	14	8	11 1/2	14	20	17 7/8
VTX-16	16	9	13 1/4	16	23	20 7/8

VTXM



The **Vortex** comes with a standard damper actuator, 24 VAC/DC, spring return. Contact factory for more information.

VTXM Dimensions in Inches

MODEL	SIZE	C	D	F	O
VTXM-06	6	10 3/4	6	10	7 1/2
VTXM-08	8	10 3/4	8	12	9 1/2
VTXM-10	10	10 3/4	10	15	11 7/8
VTXM-12	12	10 3/4	12	17	13 7/8
VTXM-14	14	11 1/4	14	20	17 7/8
VTXM-16	16	11 3/4	16	23	20 7/8

Adjustability

Adjusted from horizontal to vertical discharge by opening the center-mounted diverter plate.

Construction

Heavy Gauge Aluminum Construction

Finishes

Standard: #72 Silver metallic powder coat
 Optional standard: #00 Mill
 #12 Anodized powder coat
 #42 Gloss black powder coat
 #43 Flat black powder coat
 #52 White powder coat
 #62 Grey prime powder coat
 Custom colors available

MODEL	Duct Velocity (FPM) Velocity Pressure ("WG)	400 0.010	500 0.016	600 0.023	700 0.031	800 0.040	900 0.051	1000 0.063
VTX/VTXM-06	Air Flow (CFM)	78	98	118	137	157	176	196
	Total Pressure ("WG) Radial	0.133	0.207	0.298	0.406	0.530	0.671	0.828
	Noise Criteria (NC) Radial	22	28	32	36	40	43	46
	Radius of Diffusion (FT) Radial	2-3-4	2-3-5	2-3-6	3-4-7	3-4-8	3-5-9	4-6-11
	Total Pressure ("WG) Vertical	0.021	0.032	0.047	0.064	0.083	0.105	0.130
	Noise Criteria (NC) Vertical	<15	<15	<15	16	20	23	26
VTX/VTXM-08	Air Flow (CFM)	140	175	209	244	279	314	349
	Total Pressure ("WG) Radial	0.128	0.199	0.287	0.390	0.510	0.645	0.797
	Noise Criteria (NC) Radial	24	30	34	38	42	45	48
	Radius of Diffusion (FT) Radial	3-4-7	3-4-9	4-5-10	4-6-11	4-7-12	5-7-13	5-8-14
	Total Pressure ("WG) Vertical	0.020	0.030	0.044	0.060	0.078	0.099	0.122
	Noise Criteria (NC) Vertical	<15	<15	<15	17	21	24	27
VTX/VTXM-10	Air Flow (CFM)	218	273	327	382	436	491	545
	Total Pressure ("WG) Radial	0.110	0.172	0.248	0.337	0.440	0.557	0.688
	Noise Criteria (NC) Radial	26	31	36	40	44	47	50
	Radius of Diffusion (FT) Radial	3-4-8	3-5-10	4-6-11	4-7-13	5-8-14	6-9-16	6-10-17
	Total Pressure ("WG) Vertical	0.023	0.035	0.051	0.069	0.090	0.114	0.141
	Noise Criteria (NC) Vertical	<15	<15	17	21	24	27	30
VTX/VTXM-12	Air Flow (CFM)	314	393	471	550	628	707	785
	Total Pressure ("WG) Radial	0.120	0.187	0.270	0.368	0.480	0.608	0.750
	Noise Criteria (NC) Radial	27	32	37	41	45	48	51
	Radius of Diffusion (FT) Radial	3-5-9	3-6-12	4-7-14	5-8-16	6-10-17	6-11-18	7-11-19
	Total Pressure ("WG) Vertical	0.021	0.033	0.048	0.065	0.085	0.108	0.133
	Noise Criteria (NC) Vertical	<15	<15	18	23	26	29	32
VTX/VTXM-14	Air Flow (CFM)	428	535	641	748	855	962	1069
	Total Pressure ("WG) Radial	0.110	0.172	0.248	0.337	0.440	0.557	0.688
	Noise Criteria (NC) Radial	28	33	38	42	46	49	52
	Radius of Diffusion (FT) Radial	4-6-10	4-7-13	5-8-16	6-9-18	7-11-19	7-12-21	8-13-22
	Total Pressure ("WG) Vertical	0.023	0.035	0.051	0.069	0.090	0.114	0.141
	Noise Criteria (NC) Vertical	<15	15	19	24	27	30	33
VTX/VTXM-16	Air Flow (CFM)	558	698	838	977	1117	1256	1396
	Total Pressure ("WG) Radial	0.100	0.156	0.225	0.306	0.400	0.506	0.625
	Noise Criteria (NC) Radial	30	35	40	44	48	51	54
	Radius of Diffusion (FT) Radial	5-7-12	6-8-15	6-10-18	7-11-20	8-13-22	9-14-23	10-16-24
	Total Pressure ("WG) Vertical	0.020	0.031	0.045	0.061	0.080	0.101	0.125
	Noise Criteria (NC) Vertical	<15	17	21	26	29	32	35
VTX/VTXM-18	Air Flow (CFM)	700	875	1050	1225	1400	1575	1750
	Total Pressure ("WG) Radial	0.100	0.156	0.225	0.306	0.400	0.506	0.625
	Noise Criteria (NC) Radial	30	35	40	44	48	51	54
	Radius of Diffusion (FT) Radial	5-7-12	6-8-15	6-10-18	7-11-20	8-13-22	9-14-23	10-16-24
	Total Pressure ("WG) Vertical	0.020	0.031	0.045	0.061	0.080	0.101	0.125
	Noise Criteria (NC) Vertical	<15	17	21	26	29	32	35

performance data based on ASHRAE 70-06

Noise Criteria: Noise criteria [NC] curve which is not exceeded with a Room Attenuation of 10db and based on Sound Power Level Re: 10-12 watts.

Airflow CFM: Standard air density and isothermal conditions.

Terminal Velocity: Maximum velocity (Vt) in feet per minute at the specified distance from the outlet face (THROW) 150 fpm, 100 fpm and 50 fpm respectively.

Radius of Diffusion: Horizontal distance (THROW) in feet from the Diffuser at which the maximum velocity has been reduced to specified terminal velocity (Vt).

Vertical Projection: Projection distance [THROW] in feet -minimum value is 20-degree heating to 0 fpm terminal velocity and maximum value is 20-degree cooling to 100 fpm terminal velocity.

Total Pressure: Inches of water gauge required.

