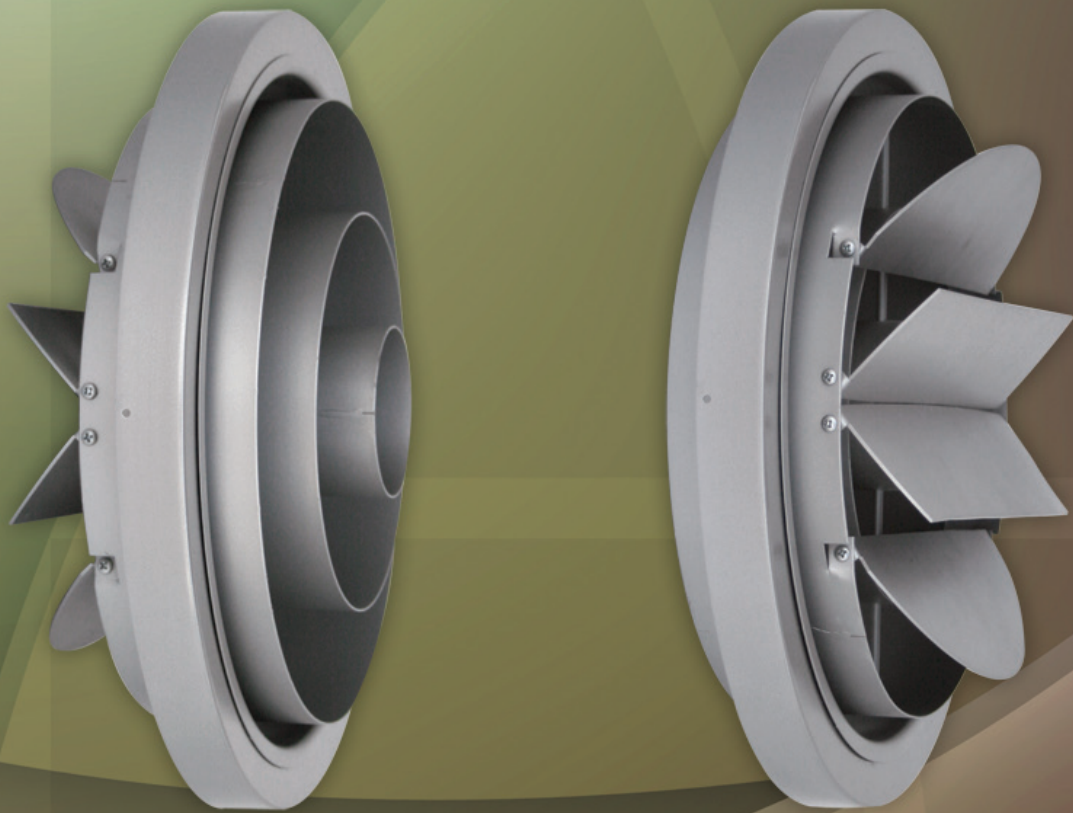


AIRCONCEPTS

AIR DISTRIBUTION PRODUCTS



ANC-ADV SERIES

ANC/ADV

Jet Pattern



Diffused Pattern



Reversible Air Pattern

*Available in -RD, -RP, & panel series
*Sizes: 6", 8", 10", 12", 14", 16", 18"

Example:
Model: ANC/ADV-10-1
CFM = 500

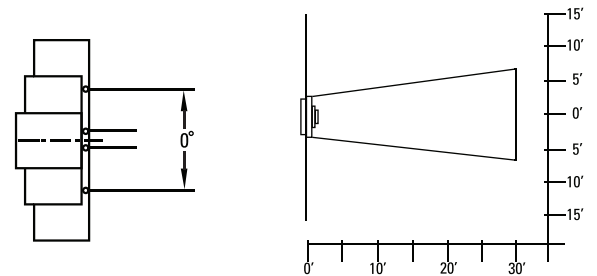
Performance values for various deflection angles

Deflection Angle	Total Pressure	Noise Criteria	Throw (Projection)
0	1.1	+2	1.0
20	1.1	+2	0.9
40	1.2	+3	0.8
60	1.4	+4	0.7
80	1.6	+6	0.6
100	2.0	+8	0.5

Total Pressure, Noise Criteria and Throw factor increases are based on standard ANC data tables.

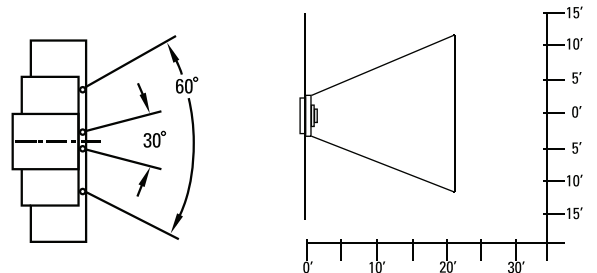
The ADV Blades set to a 0° Degree deflection jet pattern

Projection = 30ft. @ 100 fpm terminal velocity
Pressure Required = 0.092 "W.G.
Noise Criteria = <20 NC



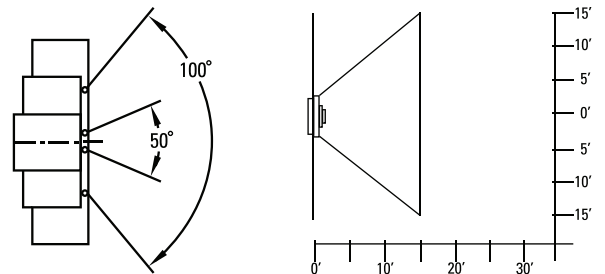
The ADV Blades set to a 60° Degree deflection spread pattern

Projection = 21ft. @ 100 fpm terminal velocity
Pressure Required = 0.128 "W.G.
Noise Criteria = <24 NC



The ADV Blades set to a 100° Degree deflection spread pattern

Projection = 15ft. @ 100 fpm terminal velocity
Pressure Required = 0.184 "W.G.
Noise Criteria = <28 NC



Adjustability

- Easy Finger Tip Adjustment
- Reversible Air Pattern
- Directional Air Pattern Control:
 - ±30° Degree Deflection
 - 360° Degree Rotation
- Diffusing Position**
- Adjustable 0° to 100° Degrees
- Projection shortened by 50%

Construction

- Standard Construction:
 - Heavy Gauge Metal Construction
- Special Construction:
 - Aluminum Construction
 - Stainless Steel Construction

Finishes

- Standard: #52 White powder coat
- Optional standard: #00 Mill (Alum)
 - #10 Clear anodized (Alum)
 - #12 Anodized powder coat
 - #42 Gloss black powder coat
 - #43 Flat black powder coat
 - #62 Grey prime powder coat
 - #72 Silver metallic powder coat
- Custom colors available