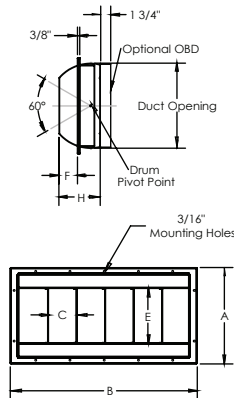


Drum Louver - Stainless Steel Series



Material

- 304 Stainless Steel Standard
- 316 Stainless Steel (Optional)

Adjustability

- $\pm 45^\circ$ Deflection
- $\pm 30^\circ$ Rotation

Finishes

- Matte Finish Standard

Options

- Opposable Blade Damper

MODEL	A	B	C	E	F	H	REQ DUCT OPENING	BLADE QTY	MOUNTING HOLES
DL-0906-SS	8-3/16	11-11/16	3	3-3/8	1-21/32	3-5/8	9-11/16 x 6-7/16	2	8
DL-1206-SS		14-11/16					12-11/16 x 6-7/16	3	8
DL-1806-SS		20-11/16					18-11/16 x 6-7/16	5	8
DL-2406-SS		26-11/16					24-11/16 x 6-7/16	5	10
DL-3006-SS		32-11/16					30-11/16 x 6-7/16	9	12
DL-3606-SS		38-11/16					36-11/16 x 6-7/16	11	14
DL-4806-SS		50-11/16					48-11/16 x 6-7/16	15	18
DL-6006-SS		62-11/16					60-11/16 x 6-7/16	19	22
DL-2010-SS	11-15/16	22-11/16	5	5-7/8	2-7/16	6	20-11/16 x 10-3/16	3	10
DL-2510-SS		27-11/16					25-11/16 x 10-3/16	4	12
DL-3010-SS		32-11/16					30-11/16 x 10-3/16	5	14
DL-3510-SS		37-11/16					35-11/16 x 10-3/16	6	16
DL-4010-SS		42-11/16					40-11/16 x 10-3/16	7	18
DL-5010-SS		52-11/16					50-11/16 x 10-3/16	9	22
DL-6010-SS		62-11/16					60-11/16 x 10-3/16	11	26
DL-7010-SS		72-11/16					70-11/16 x 10-3/16	13	30
DL-2012-SS	13-15/16	22-11/16	5	6-7/8	3	6	20-11/16 x 12-3/16	3	10
DL-3012-SS		32-11/16					30-11/16 x 12-3/16	5	14
DL-4012-SS		42-11/16					40-11/16 x 12-3/16	7	18
DL-5012-SS		52-11/16					50-11/16 x 12-3/16	9	22
DL-6012-SS		62-11/16					60-11/16 x 12-3/16	11	26
DL-7012-SS		72-11/16					70-11/16 x 12-3/16	13	30
DL-1515-SS	17	17-11/16	5	9-13/16	3-13/16	8-1/8	15-11/16 x 15-3/16	2	8
DL-2015-SS		22-11/16					20-11/16 x 15-3/16	3	10
DL-2515-SS		27-11/16					25-11/16 x 15-3/16	4	12
DL-3015-SS		32-11/16					30-11/16 x 15-3/16	5	14
DL-4015-SS		42-11/16					40-11/16 x 15-3/16	7	18
DL-5015-SS		52-11/16					50-11/16 x 15-3/16	9	22
DL-6015-SS		62-11/16					60-11/16 x 15-3/16	11	26
DL-7015-SS		72-11/16					70-11/16 x 15-3/16	13	30

Project :	<h2>DL-SS Series</h2> <p>Drum Louver - Stainless Steel</p>	
Architect :		
Engineer :		
Contractor :	Form # : 40010S	
Submitted By :	Date :	Drawn By : MH July 2013