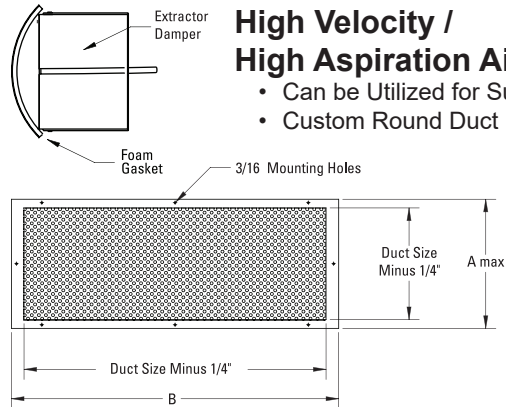
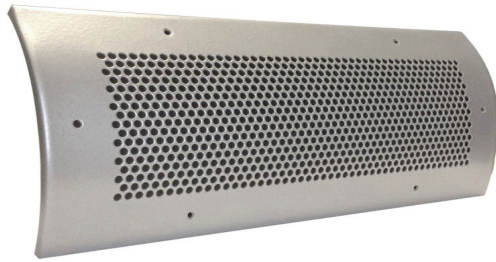


## Duct Mount Perforated Grille Series



### High Velocity / High Aspiration Air Outlet

- Can be Utilized for Supply, Return or Exhaust Air
- Custom Round Duct Mount

MODEL	A	B	Duct Opening	Minimum Duct Diameter	Mounting Holes
DMPG-1204	6-1/4	14-1/4	12 X 4	8	6
DMPG-2404	6-1/4	26-1/4	24 X 4	8	10
DMPG-3604	6-1/4	38-1/4	36 X 4	8	12
DMPG-1206	8-1/4	14-1/4	12 X 6	8	6
DMPG-2406	8-1/4	26-1/4	24 X 6	8	10
DMPG-3606	8-1/4	38-1/4	36 X 6	8	12
DMPG-1208	10-1/4	14-1/4	12 X 8	10	6
DMPG-2408	10-1/4	26-1/4	24 X 8	10	10
DMPG-3608	10-1/4	38-1/4	36 X 8	10	12
DMPG-1210	12-1/4	14-1/4	12 X 10	12	8
DMPG-2410	12-1/4	26-1/4	24 X 10	12	12
DMPG-3610	12-1/4	38-1/4	36 X 10	12	14
DMPG-1212	14-1/4	14-1/4	12 X 12	14	8
DMPG-2412	14-1/4	26-1/4	24 X 12	14	12
DMPG-3612	14-1/4	38-1/4	36 X 12	14	14

(Inches measured to the nearest 1/16")

### Standard Material

- Heavy Gauge Aluminum
- Foam Gasket

### Optional Material

- Heavy Gauge Steel
- Stainless Steel #304
- Stainless Steel #316

### Options

- Duct Diameter \_\_\_\_\_
- Extractor Damper

### Notes

- Mounting Screws Included

### Standard Finishes

- #00 mill
- #10 clear anodized
- #12 anodized powder coat
- #42 gloss black powder coat
- #43 flat black powder coat
- #52 white powder coat
- #62 grey primer powder coat (on field painting)
- #72 silver metallic powder coat
- #99 custom color / color match (paint chip required)

<b>Project :</b>	<h2>DMPG Series</h2> <h3>Duct Mount Perforated Grille</h3>	
<b>Architect :</b>		
<b>Engineer :</b>		
<b>Contractor :</b>		
<b>Submitted By :</b>	<b>Date :</b>	<b>Form # : 40060S</b>
		<b>Drawn By : MH January 2005</b>