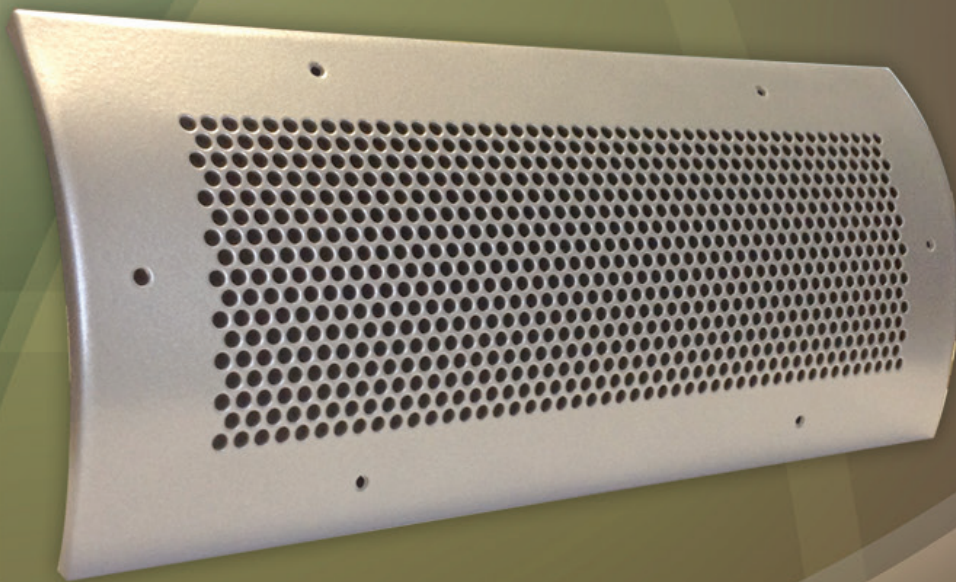




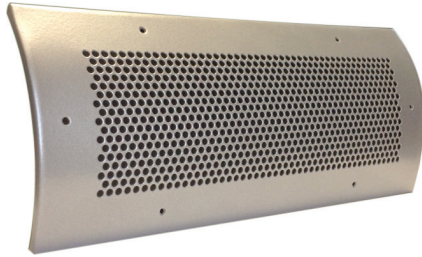
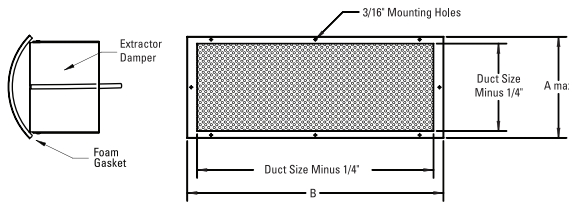
# AIRCONCEPTS

AIR DISTRIBUTION PRODUCTS



DMPG SERIES

## DMPG



### DMPG Dimensions in Inches

MODEL	A	B	Duct Opening	Minimum Duct Dia.	Mount Holes
DMPG-1204	6 1/4	14 1/4	12 x 4	8	6
DMPG-2404	6 1/4	26 1/4	24 x 4	8	10
DMPG-3604	6 1/4	38 1/4	36 x 4	8	12
DMPG-1206	8 1/4	14 1/4	12 x 6	8	6
DMPG-2406	8 1/4	26 1/4	24 x 6	8	10
DMPG-3606	8 1/4	38 1/4	36 x 6	8	12
DMPG-1208	10 1/4	14 1/4	12 x 8	10	6
DMPG-2408	10 1/4	26 1/4	24 x 8	10	10
DMPG-3608	10 1/4	38 1/4	36 x 8	10	12
DMPG-1210	12 1/4	14 1/4	12 x 10	12	8
DMPG-2410	12 1/4	26 1/4	24 x 10	12	12
DMPG-3610	12 1/4	38 1/4	36 x 10	12	14
DMPG-1212	14 1/4	14 1/4	12 x 12	14	8
DMPG-2412	14 1/4	26 1/4	24 x 12	14	12
DMPG-3612	14 1/4	38 1/4	36 x 12	14	14

### Versatility

Can be utilized for supply, return or exhaust air.  
Custom Round Duct Mount

### Construction

Heavy Gauge Aluminum Construction  
Foam gasket

### Finishes

Standard: #72 Silver Metallic Powder Coat  
Custom colors available

### Supply Air Flow Data

\* See website for Extract Air Flow Data

Model Size	Opening Area	Opening Velocity Static Pressure	400 0.05	500 0.07	600 0.1	700 0.13	800 0.17	1000 0.25	1200 0.33
DMPG-1204	0.306	CFM	122	153	184	214	245	306	367
		NC	•	•	•	20	22	26	29
		Projection	4-8-17	5-10-19	6-12-21	7-15-23	8-17-24	10-19-27	12-21-30
DMPG-2404	0.618	CFM	247	309	371	433	494	618	742
		NC	•	•	22	24	26	30	32
		Projection	6-12-24	8-15-27	9-18-30	11-21-32	12-24-35	15-27-39	18-30-42
DMPG-3604	0.931	CFM	372	465	559	652	745	931	1117
		NC	•	20	23	25	27	30	33
		Projection	7-14-29	9-18-34	11-21-37	12-25-40	14-29-42	18-34-47	21-37-52
DMPG-1206	0.469	CFM	188	235	281	328	375	469	563
		NC	•	•	21	24	26	29	32
		Projection	6-11-21	7-14-24	8-17-26	10-19-28	11-21-30	14-24-34	17-26-37
DMPG-2406	0.948	CFM	379	474	569	664	758	948	1138
		NC	•	20	23	25	27	30	33
		Projection	7-14-29	9-18-34	11-21-37	12-25-40	14-29-42	18-34-47	21-37-52
DMPG-3606	1.427	CFM	571	714	856	999	1141	1427	1712
		NC	•	•	20	22	24	27	30
		Projection	6-13-25	8-16-31	9-19-37	11-22-40	13-25-43	16-31-48	19-37-52
DMPG-1208	0.632	CFM	253	316	379	442	506	632	758
		NC	•	•	22	24	26	30	32
		Projection	6-12-24	8-15-27	9-18-30	11-21-32	12-24-35	15-27-39	18-30-42
DMPG-2408	1.278	CFM	511	639	767	895	1022	1278	1534
		NC	•	21	24	27	29	32	35
		Projection	8-17-34	11-21-39	13-25-43	15-30-47	17-34-50	21-39-56	25-43-61
DMPG-3608	1.924	CFM	770	962	1154	1347	1539	1924	2309
		NC	•	22	25	27	29	33	36
		Projection	9-20-40	12-25-48	15-30-53	17-35-57	20-39-61	25-48-68	30-53-75
DMPG-1210	0.795	CFM	318	398	477	557	636	795	954
		NC	•	•	22	24	26	30	33
		Projection	7-13-27	8-17-31	10-20-34	12-33-37	13-27-39	17-31-44	20-34-48
DMPG-2410	1.608	CFM	643	804	965	1126	1286	1608	1930
		NC	•	21	24	26	28	32	35
		Projection	8-18-36	11-22-44	13-27-48	16-31-52	18-36-56	22-44-62	27-48-68
DMPG-3610	2.421	CFM	968	1210	1453	1695	1937	2421	2905
		NC	•	23	26	28	30	33	36
		Projection	10-22-44	14-27-54	16-33-59	19-38-64	22-44-68	27-54-77	33-59-84
DMPG-1212	0.959	CFM	384	480	575	671	767	959	1151
		NC	•	20	23	25	27	31	34
		Projection	7-15-29	9-18-34	11-22-37	13-26-40	15-29-43	18-34-48	22-37-53
DMPG-2412	1.938	CFM	775	969	1163	1357	1550	1938	2326
		NC	•	22	25	27	29	33	36
		Projection	9-20-40	12-25-48	15-30-53	17-35-57	20-40-61	25-48-68	30-53-75
DMPG-3612	2.917	CFM	1167	1459	1750	2042	2337	2917	3500
		NC	20	24	26	29	31	34	37
		Projection	11-24-48	15-30-59	18-36-65	21-42-70	24-48-75	30-59-84	36-65-92

Performance data based on ASHRAE 70-06

**Projection:** Projection distance [THROW] in feet from the Nozzle discharge at which the maximum velocity has been reduced to specified terminal velocity [Vt].

**Terminal Velocity:** Maximum velocity [Vt] in feet per minute at the specified distance from the outlet face [THROW] 200 fpm, 100fpm and 50 fpm respectively.

**Airflow CFM:** Standard air density and isothermal conditions.

**Static Pressure:** Inches of water gauge required.

**Noise Criteria:** Noise criteria [NC] curve which is not exceeded with a Room Attenuation of 10db and based on Sound Power Level Re: 10-12 watts.